

OWNER'S MANUAL MOSQUITO PREVENTER



READ CAREFULLY AND RETAIN FOR FUTURE REFERENCE – IMPORTANT!

MODEL: 900

IMPORTANT SAFETY INSTRUCTIONS

Please read these instructions before using the **GREEN STRIKE** Mosquito Preventer, and keep for future reference.

1. Do not contact any moving parts
2. Do not position the unit near heat, gas, oil or other flammable materials
3. Do not insert fingers or any foreign objects into the Mosquito Preventer
4. Collected leaves and debris in the Breeding Pond may negatively impact the operation. Remove any debris from the Breeding Pond
5. When emptying the Mosquito Preventer as part of the maintenance every 30 days, it is best to empty the water directly into a drain
6. Avoid getting water on the battery pack or into the battery compartment where it could cause corrosion and damage
7. Store replacement kits (Reactor and Landing Strips) in a cool, dry location
8. Only use attachments or accessories recommended or sold by the manufacturer

TROUBLESHOOTING *Patents Issued and Pending

| PROBLEM: | POSSIBLE CAUSE: | ACTIONS / CORRECTIONS |
|----------------------------------|--------------------------------|--|
| Power button flashing RED light | Low Battery Power | Remove the battery pack, replace the old batteries with new batteries |
| No water in the Pond | No Battery Power | Remove the battery pack, replace the old batteries with new batteries, and press the Power Button for 1 second to put the Mosquito Preventer into operating mode |
| Water in Breeding Pond is cloudy | The unit needs to be refreshed | Follow the Maintenance and Cleaning instructions |

HOW THE MOSQUITO PREVENTER WORKS

The Mosquito Preventer provides an attractive environment for female mosquitoes to lay their eggs. Our patented mosquito attractant entices female mosquitoes into the Breeding Pond, where they lay their eggs, either on the Landing Strips, or in the water in the Breeding Pond. The eggs hatch into larvae (wigglers). Long before these wigglers moult into the pupal stage (prior to adult emergence) they, together with any eggs in the Breeding Pond, are automatically eliminated. The internal pump drains the Breeding Pond through a filter every 72-hours. The eggs and larvae are filtered out and die in the filter. The Preventer then recycles the water, which in addition to the attractant from the Reactor, will now also contain naturally occurring mosquito pheromones and scents, further increasing the attractiveness of the Breeding Pond. After 40 days of use, there is a noticeable reduction in the mosquito population.

PLACEMENT AND OPERATING INSTRUCTIONS

The Mosquito Preventer consists of the Preventer, the Rain Guard (top), the Reactor with the mosquito attractant already installed within, and two mosquito Landing Strips. Please refer to the reverse side to see each of these items. Save the carton and packaging for storage if needed.

After you have completed the Installation and set-up outlined on the reverse, place your Mosquito Preventer in a shaded location, out of the wind and under vegetation and/or near standing water.

Please refer to images and video available at www.gs.international for tips and examples of proper placement.

After you have placed your Mosquito Preventer, press the flashing green Power Button to place the unit in automatic operational mode. When the Mosquito Preventer is in operational mode, the Power Button should not be flashing, and the Breeding Pond should be filled with water. The Power Button will go out during normal, automatic operating mode to conserve power.

CONSUMABLES & REFILL KITS

Refill Kits (Reactor and Landing Strips)



Reactor



Landing Strips

MAINTENANCE & CLEANING INSTRUCTIONS

The Mosquito Preventer requires maintenance every 30 days to ensure a continued high level of effectiveness and smooth operation. The Reactor, Landing Strips and water need to be replaced every month. The batteries are expected to last between 4 – 6 months before a change is required.

For the maintenance, please follow these steps

Step 1: Press the Power Button and hold it for 5 seconds. This will put the Mosquito Preventer into maintenance mode. The power button will flash green, and the Breeding Pond will empty.

Step 2: Remove the Drain Plug (H) and empty all of the water out of the Mosquito Preventer into a drain. Note: Do not empty onto the ground, it will create an attraction for female mosquitoes.

Step 3: Pull out the Reactor Drawer (G), remove the old Reactor. Peel the label off the new Reactor, being careful to keep it upright, and place it into the Reactor Drawer, and close.

Step 4: Remove the old Landing Strips (K), dry the surface where the landing strips were attached, and attach the new Landing Strips. Be sure to affix the Landing Strips firmly.

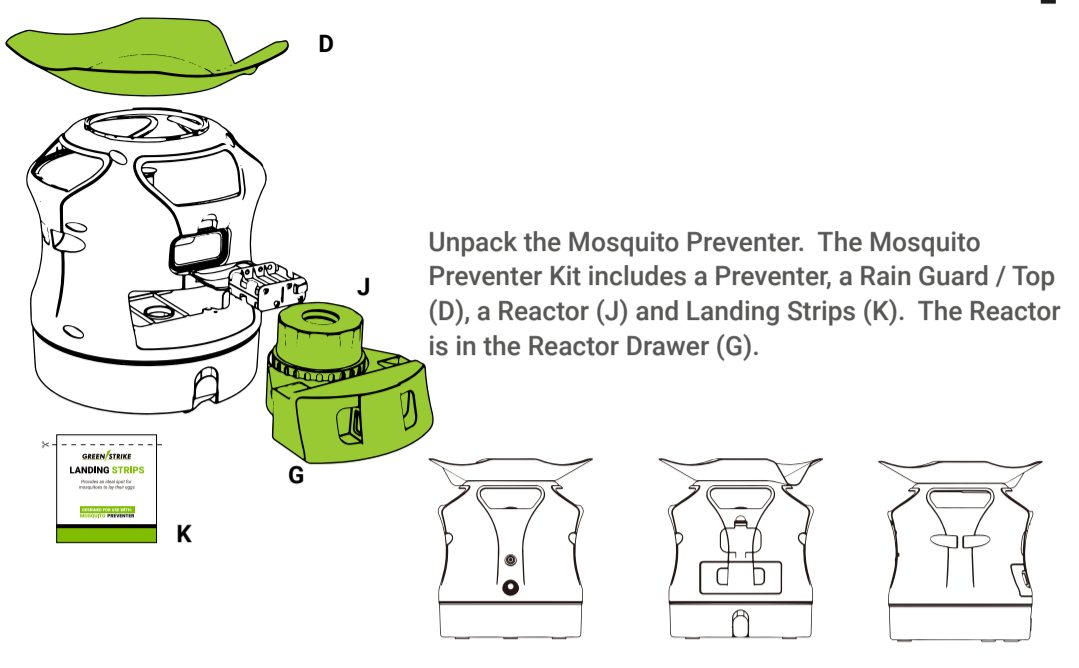
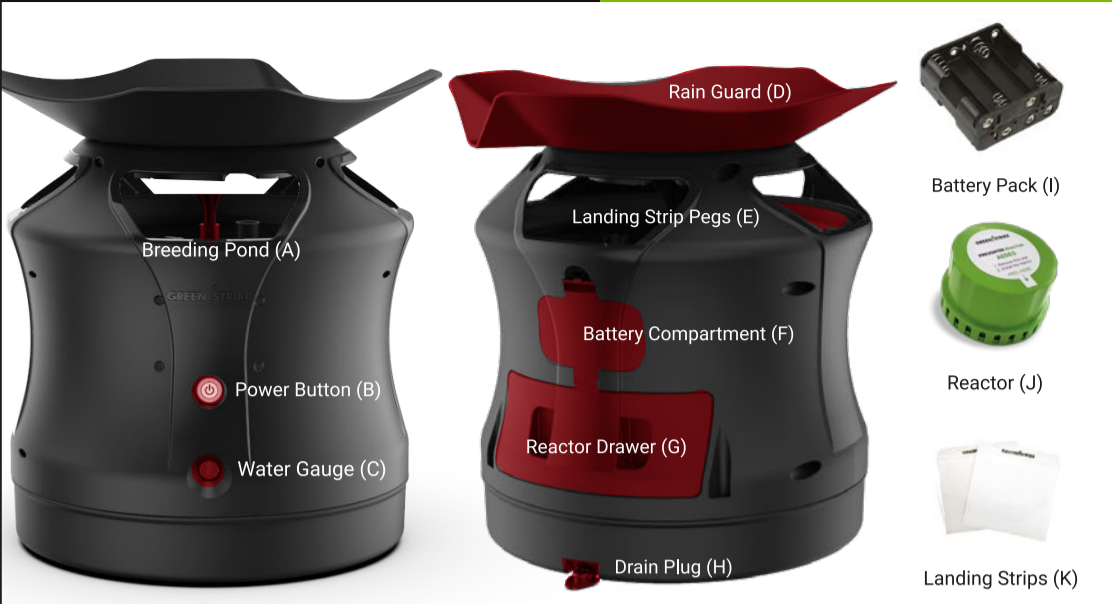
Step 5: Refill with 4.5 litres of clean water. Fill until the water level indicator (C) indicates the Internal Reservoir is full. Please see image on reverse.

Step 6: Place the Mosquito Preventer back into its location, press the Power Button for 1 second. The unit will rinse, then the valve will close (after about 20 seconds), and the Breeding Pond will fill. The Mosquito Preventer is now back in normal, automatic operating mode. The Green light should be on.

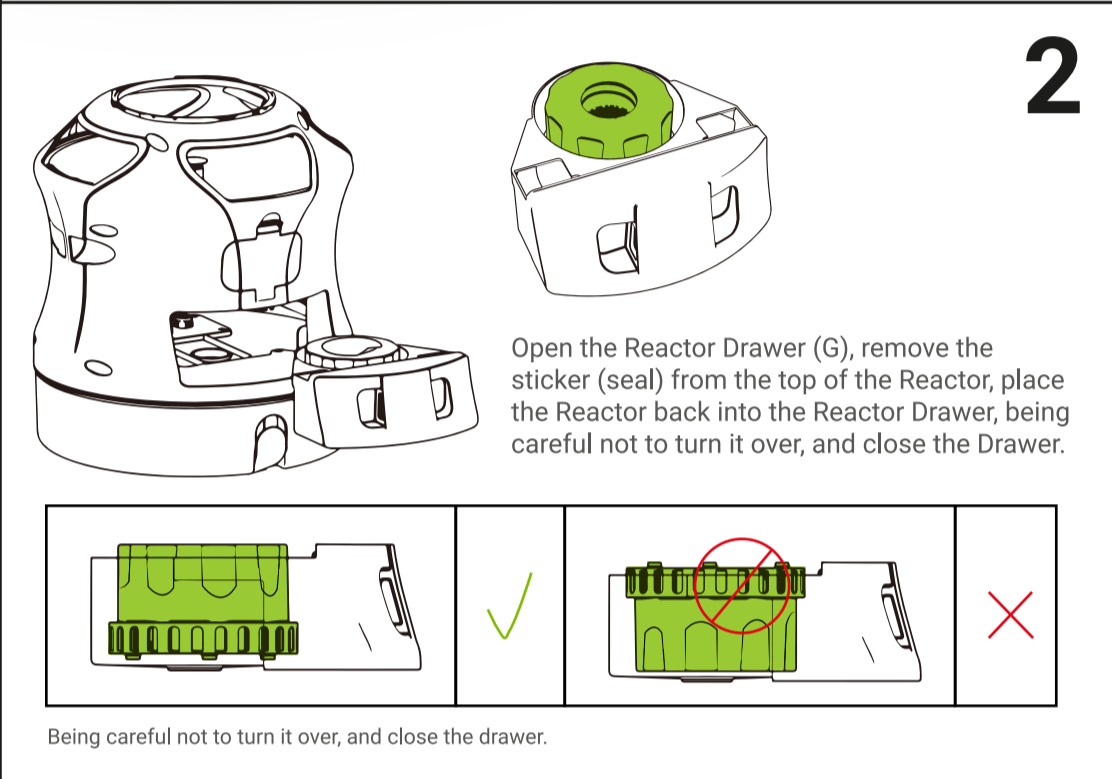
Please refer to images on reverse, or the "How To" video at www.gs.international

LIMITED WARRANTY

GREEN STRIKE guarantees to the original purchaser that this product is free from defective materials and workmanship. This warranty is limited to remedy any defective part for a period of one year from the date of original purchase. Retain your original receipt as proof of purchase. This warranty does not apply to, in our judgment, misuse or abuse. If this unit has been altered, no warranty is in force. In no case shall GREEN STRIKE be liable for any accidental, punitive, consequential, or any other damages of any kind for breach of this or any other warranty, expressed or implied, whatsoever.

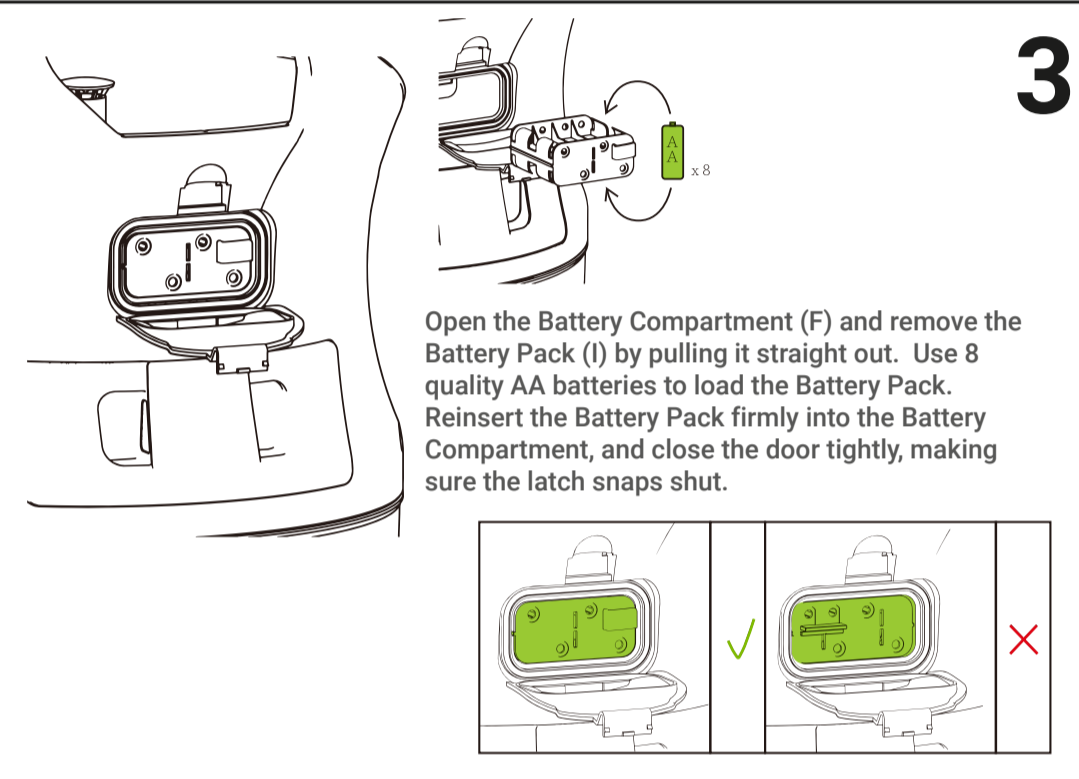


Unpack the Mosquito Preventer. The Mosquito Preventer Kit includes a Preventer, a Rain Guard / Top (D), a Reactor (J) and Landing Strips (K). The Reactor is in the Reactor Drawer (G).

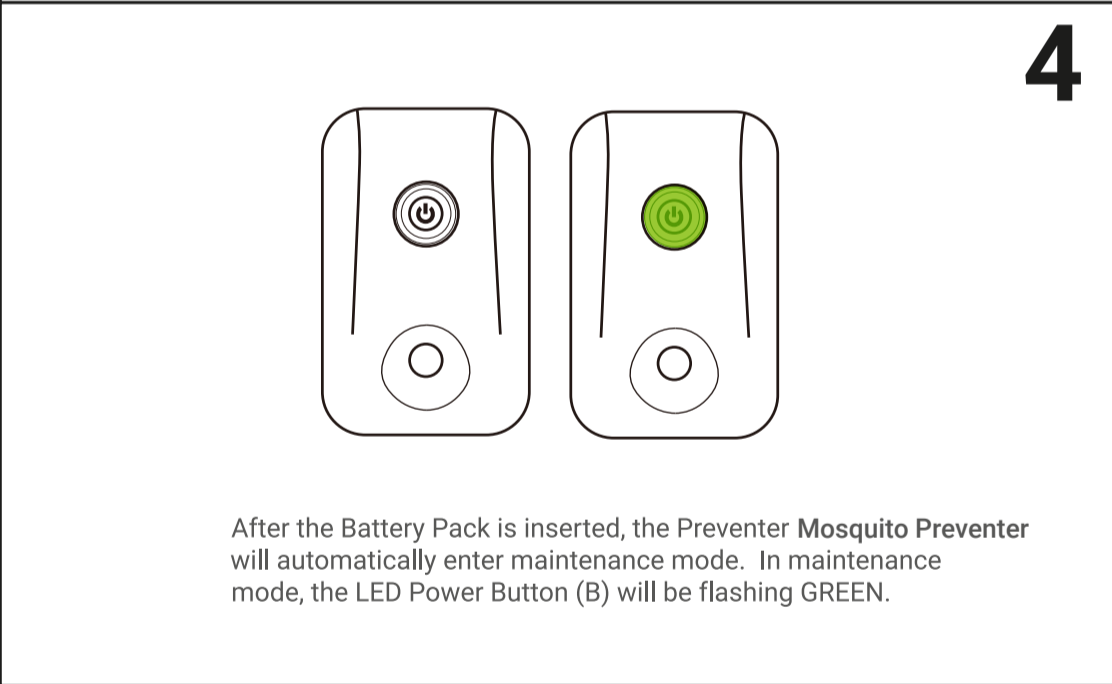


Open the Reactor Drawer (G), remove the sticker (seal) from the top of the Reactor, place the Reactor back into the Reactor Drawer, being careful not to turn it over, and close the Drawer.

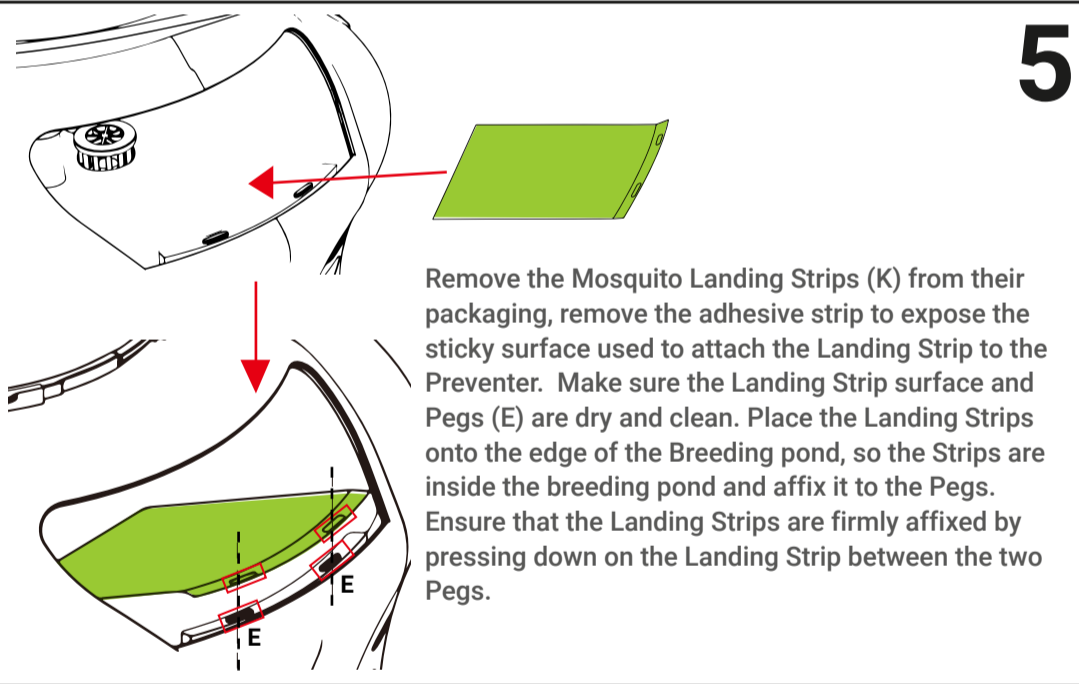
Being careful not to turn it over, and close the drawer.



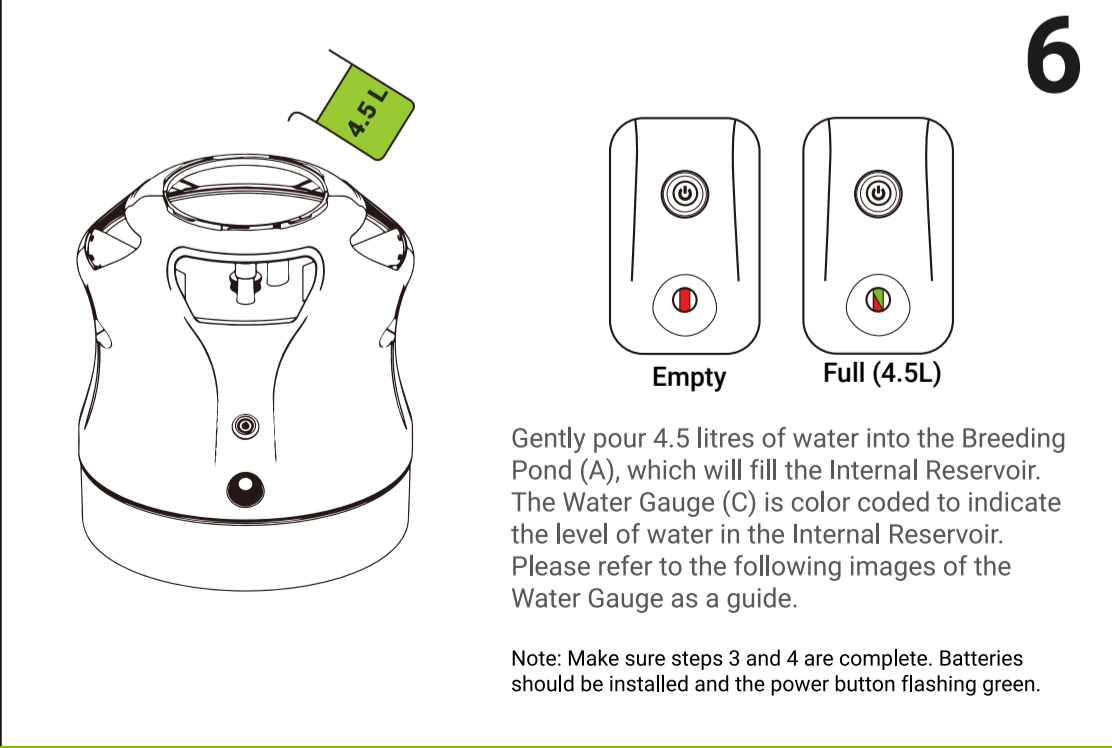
Open the Battery Compartment (F) and remove the Battery Pack (I) by pulling it straight out. Use 8 quality AA batteries to load the Battery Pack. Reinsert the Battery Pack firmly into the Battery Compartment, and close the door tightly, making sure the latch snaps shut.



After the Battery Pack is inserted, the Preventer Mosquito Preventer will automatically enter maintenance mode. In maintenance mode, the LED Power Button (B) will be flashing GREEN.



Remove the Mosquito Landing Strips (K) from their packaging, remove the adhesive strip to expose the sticky surface used to attach the Landing Strip to the Preventer. Make sure the Landing Strip surface and Pegs (E) are dry and clean. Place the Landing Strips onto the edge of the Breeding pond, so the Strips are inside the breeding pond and affix it to the Pegs. Ensure that the Landing Strips are firmly affixed by pressing down on the Landing Strip between the two Pegs.



Gently pour 4.5 litres of water into the Breeding Pond (A), which will fill the Internal Reservoir. The Water Gauge (C) is color coded to indicate the level of water in the Internal Reservoir. Please refer to the following images of the Water Gauge as a guide.

Note: Make sure steps 3 and 4 are complete. Batteries should be installed and the power button flashing green.



Attach the Rain Guard (D) to the top of the Preventer. Place the Rain Guard over the opening at the top of the Preventer, and gently turn it clockwise, pressing down just a little, until it locks into place. The orientation of the Rain Guard is not important. Please refer to the set-up video at www.gs.international.

Follow "Placement and Operating" Instructions to START your Mosquito Preventer.