

MOSQUITO ELIMINATOR OWNER'S MANUAL

MODEL: 915



GREEN STRIKE

Green Strike International Limited
2A Beverly House, 93-107 Lockhart Road
WanChai, Hong Kong
Visit us online at www.gs.international

HOW THE ELIMINATOR INSECT TRAP WORKS

Mosquitoes and flying insects are attracted to the Eliminator by a unique combination of lures, including patented No Mating Technology, UV-LED light, IR light, and a heat source. A powerful fan pulls the mosquitoes and insects into the base, where they are trapped and die of dehydration. The base is easily removed for emptying and cleaning.

INSTALLATION & OPERATING INSTRUCTIONS

1. Unpack the Eliminator. Save carton for storage if needed
2. Place the Eliminator approximately 3 – 6 feet above the floor / ground for the best performance and access for cleaning
3. Plug one end of the power cord into the Eliminator, and the other end into the electrical outlet.
4. Turn the Eliminator on by pressing the power button
5. When using outdoors, plug the power cord into an outdoor outlet or extension cord as explained in "IMPORTANT INSTRUCTIONS"
6. For best results, leave the unit on at all times, except when servicing or cleaning
7. For outdoor use only. It is recommended to place the Eliminator 10 – 30 feet away from where people will be sitting
8. Catch rate activity will be higher at night. For best results it is recommended to keep the Eliminator away from competing light sources

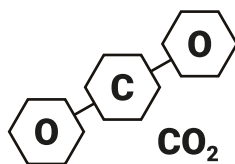
MAINTENANCE & CLEANING INSTRUCTIONS

Regular cleaning of the Eliminator will extend the life of the unit and result in more efficient operation.

1. Be sure to clean and maintain the unit once per week
2. Before cleaning, unplug the unit
3. To clean, remove the base from the unit, and clean out all of the dead mosquitoes and insects with a brush.
4. Replace the base while being careful NOT to press or push on the screen windows.

CO2 MOSQUITO ATTRACTANT TABLETS

The **GREEN STRIKE** CO2 attractant is an Ammonium Bicarbonate tablet that when heated, it produces CO2 to mimic human respiration. Mosquitoes are attracted to CO2. Each tablet last approximately 4 – 5 days.



CONSUMABLES & REPLACEMENT PARTS

XXX C02 ATTRACTANT TABLET REPLACEMENTS

SAVE THESE INSTRUCTIONS

LIMITED WARRANTY

GREEN STRIKE guarantees to the original purchaser that this product is free from defective materials and workmanship. This warranty is limited to remedy any defective part for a period of one year from the date of original purchase. Retain your original receipt as proof of purchase. This warranty does not apply to the light bulb, nor to, in our judgement, misuse or abuse. If this unit has been altered, no warranty is in force. In no case shall GREEN STRIKE be liable for any accidental, punitive, consequential, or any other damages of any kind for breach of this or any other warranty, expressed or implied, whatsoever.



**READ
CAREFULLY
AND RETAIN
FOR FUTURE
REFERENCE –
IMPORTANT!**

IMPORTANT SAFETY INSTRUCTIONS

Please read these instructions before using the **GREEN STRIKE** Eliminator, and keep for future reference.

1. To reduce the risk of injury, close supervision is necessary when the Eliminator is used near children
2. Do not contact any moving parts
3. Connect only to a circuit that is protected by a ground-fault circuit interrupter (GFCI)
4. Do not store or place the Eliminator where it can fall or be pulled into a bath tub or sink
5. Always turn the Eliminator off and disconnect the plug before cleaning or servicing
6. Do not position the unit near heat, gas, oil or other flammable materials
7. Place product out of reach from children
8. Do not insert fingers or any foreign objects into the Eliminator while it is connected to an electrical outlet
9. Collected mosquitoes and insects within the unit may contribute to fire, so clean the unit frequently
10. Do not clean the Eliminator with water spray. Do not place it where it can fall into water, or near flammable materials.
11. Do not touch the fan while in motion
12. Do not abuse the cord – never carry or hang the unit by the cord, or yank it to disconnect from the outlet. Keep the cord away from heat, oil and sharp edges
13. Never operate this product if it has a damaged cord or plug, if it is not working properly, if it has been dropped or damaged, or if it has been dropped in water
14. Use only extension cords that are clearly marked "suitable for use with outdoor appliances" and that have plugs and receptacles that match the product plug.
15. Replace all damaged cords.
Only use attachments or accessories recommended or sold by the manufacturer
16. Do not unplug by pulling the cord. To unplug, hold the plug, not the cord.
17. Do not use the Eliminator on a desk or in your hand.

WARNING: When using electric appliances, basic precautions should always be taken, including the following:

1. Unplug from outlet when not using and before servicing or cleaning
2. To reduce the risk of electrical shock, do not put the Eliminator in water or other liquids

WARNING: Risk of Electric Shock.

CAUTION: To reduce the risk of injury from moving parts, unplug before cleaning or servicing.